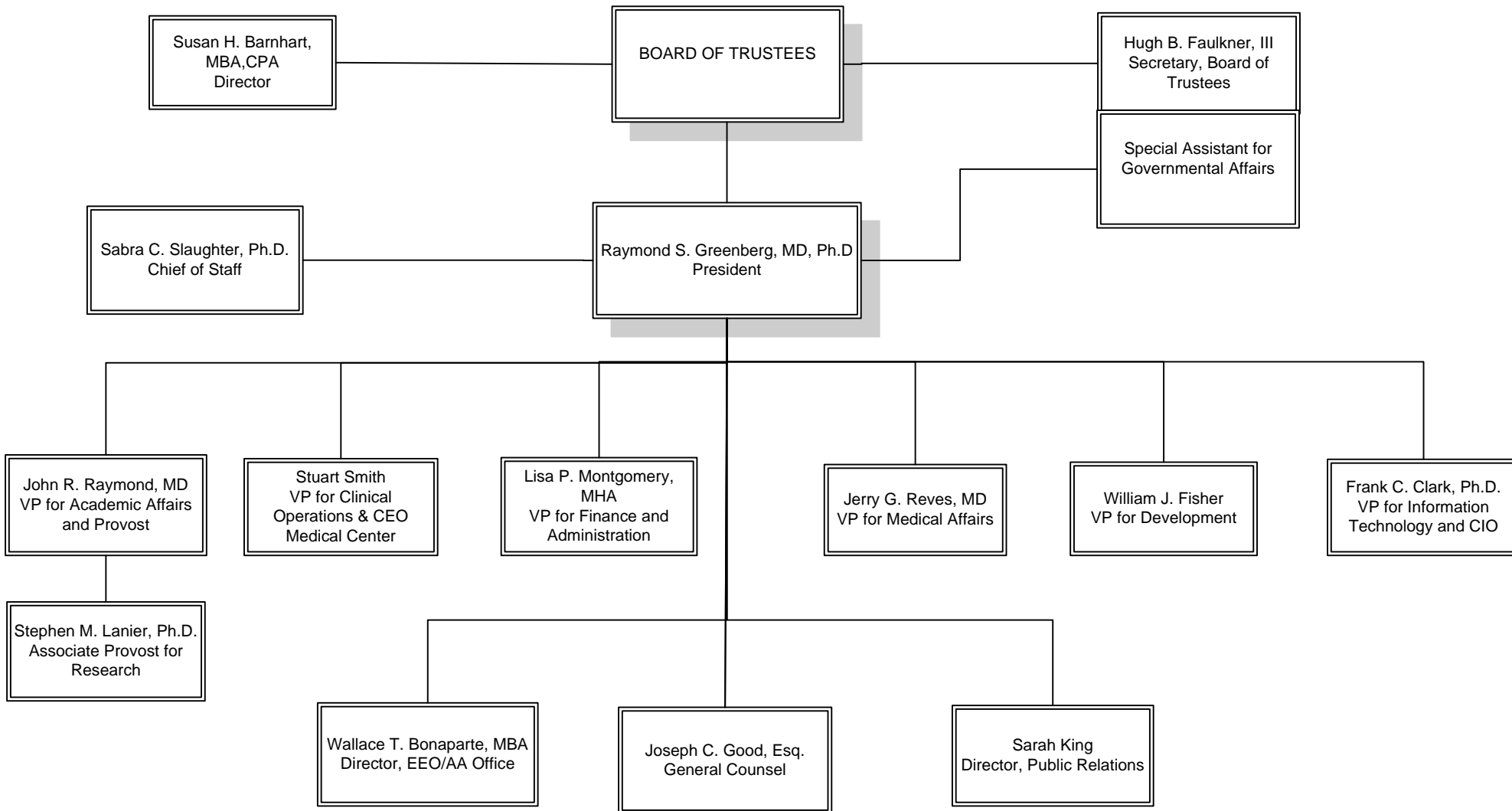


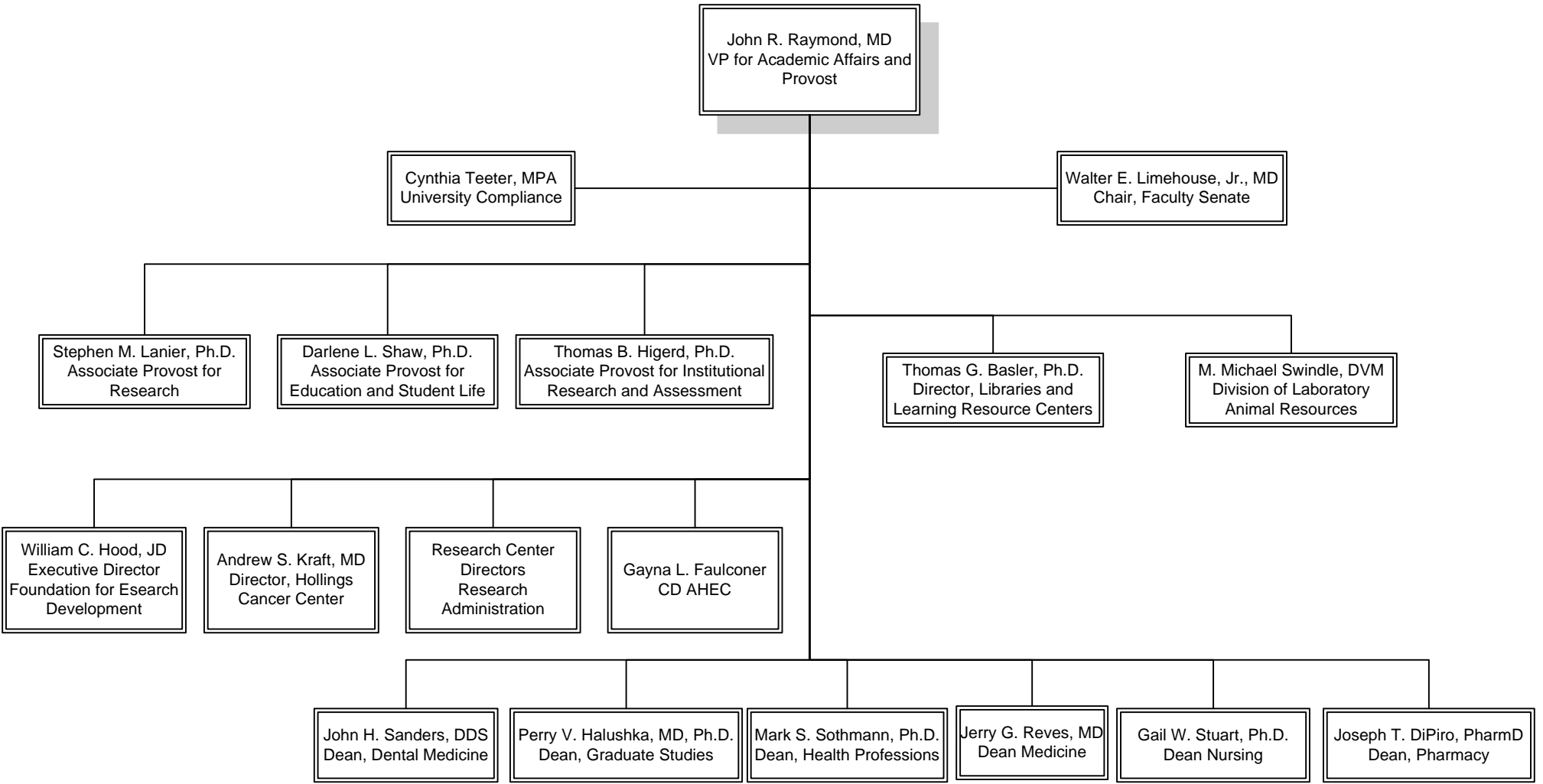
# MUSC ORGANIZATIONAL CHARTS

## CENTRAL ADMINISTRATION



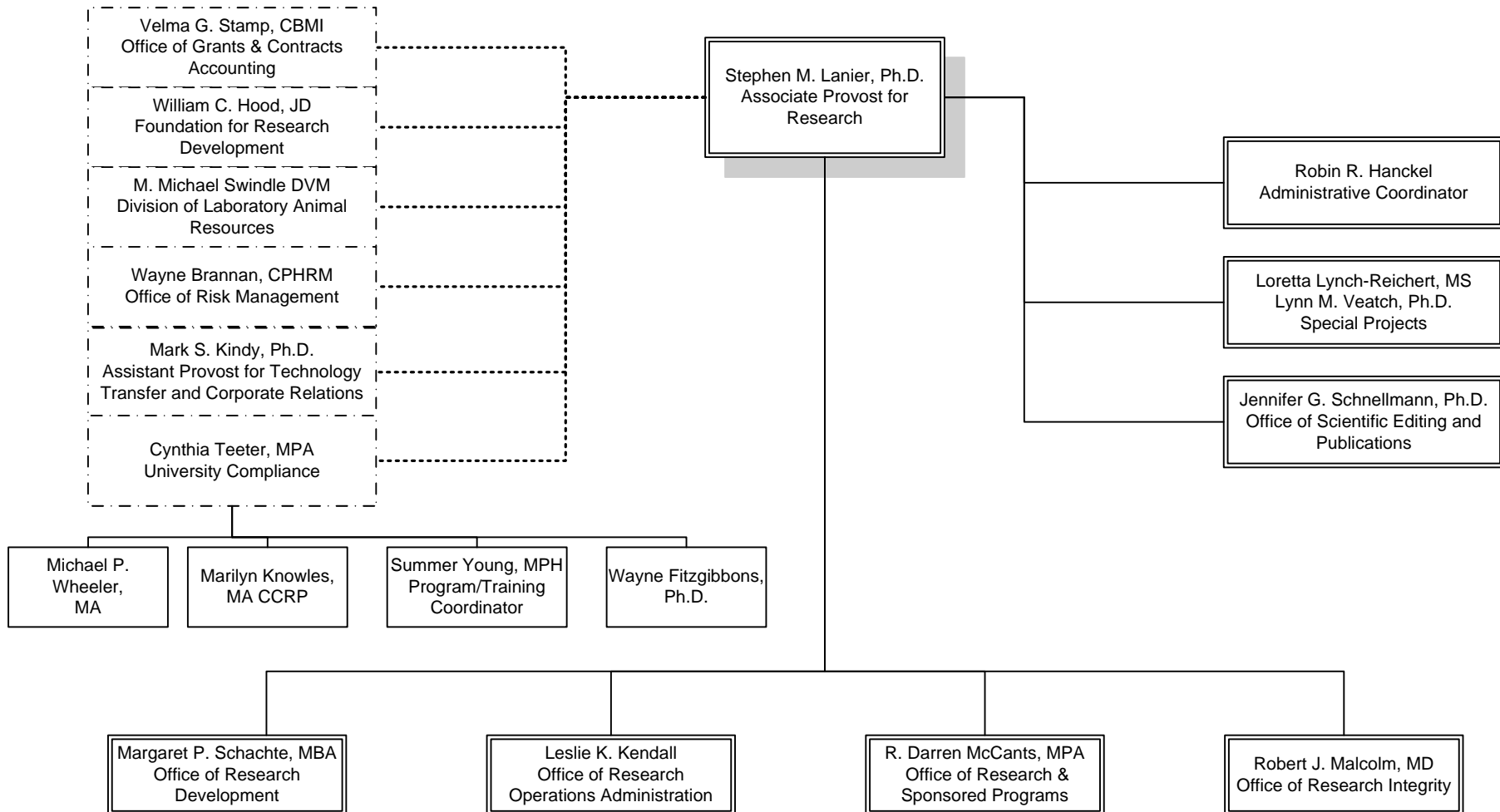
# MUSC ORGANIZATIONAL CHARTS

## VICE PRESIDENT FOR ACADEMIC AFFAIRS AND PROVOST



# MUSC ORGANIZATIONAL CHARTS

## ASSOCIATE PROVOST FOR RESEARCH



Dotted lines represent offices that have separate direct reporting lines but have extensive involvement and engagement with the Office of the Associate Provost for Research.

# MUSC ORGANIZATIONAL CHARTS

## OFFICE OF RESEARCH INTEGRITY

